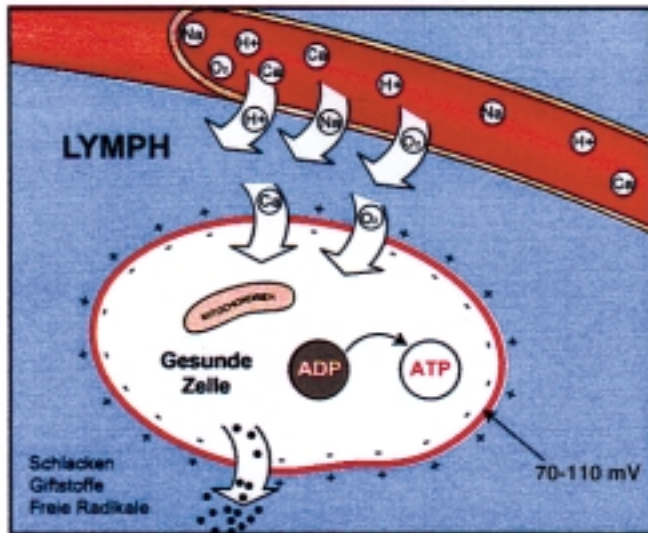
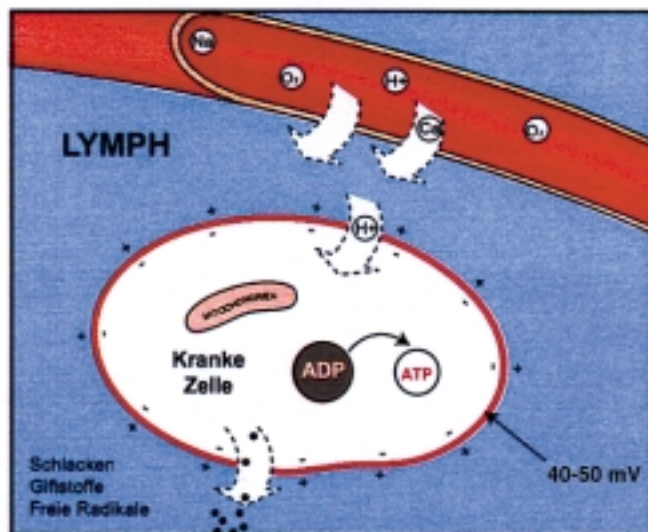


Ion transportation has an effect on cell vitalization



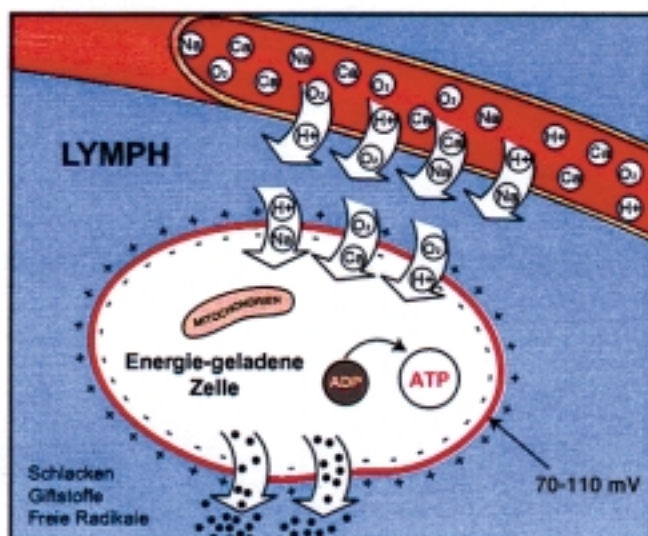
A healthy cell

needs enough ions as nutrition to build ATP molecules (energy molecules) as well as a cell voltage between 70 - 110 mV in order to keep the cell energy constant.



A sick cell

loses energy, there is not enough ATP available, the voltage of the cell membrane drops down to 40 - 50 mV. Caution: cancer cells only have a voltage of 20 mV and are not able to regenerate anymore. They are fermenting and need 16 times more energy from their environment.



An energy-powered cell

QRS builds up energy within the cells and keeps it at a constant level via the specific magnetic fields. At the same time slag and toxic waste is extracted from the cell. This effect is unique and therefore patented worldwide.